



**IRIS and Fraxis**

IRIS is an effective system for superficial and deeper vascular and pigmented lesion treatment. 532 nm has a high absorption rate by hemoglobin and melanin; therefore, the temperature for clinical treatment is reached at a low energy for small and superficial vessels, as well as pigmented lesions. Fraxis is a superior CO<sub>2</sub> fractional laser system. A uniform and stable beam quality via a 30 W RF metal tube provides safe and accurate operation, with less PIH risk and short downtime.

**ILOODA Co., Ltd.:** + 82 31 278 4660 (ext. 202) or visit <http://ilooda.en.ec21.com/> or [www.ilooda.com](http://www.ilooda.com)



**VECTRA M3**

With the revolutionary new VECTRA M3, Canfield Imaging Systems has once again taken aesthetic surgery consultations to an entirely new level. Compact and cost-effective, the VECTRA M3 creates amazingly lifelike three-dimensional (3D) simulations of aesthetic procedures for the face, neck and décolletage. A perfect fit for today's aesthetic practice, the VECTRA M3 delivers extraordinary performance in an advanced 3D imaging solution.

**Canfield Imaging Systems:** 973-276-0336 or visit [www.canfieldsci.com](http://www.canfieldsci.com)



**Thermage CPT**

Thermage® is setting a standard for single treatment, non-invasive skin tightening and body contouring. The new Thermage CPT takes full advantage of our proprietary Comfort Pulse Technology™, coupled with a new, vibrating handpiece to deliver markedly more efficient and comfortable treatments. Interchangeable Thermage tips allow the clinician to customize individual treatments, delivering excellent results on problem areas including the face, eyes, arms, abdomen, thighs, buttocks and hands.

**Solta Medical, Inc.:** 877-782-6946 or visit [www.thermage.com](http://www.thermage.com)



**myPROBIOTIC PEELS**

myPROBIOTIC PEELS are new, non-invasive clinical treatments featuring the power of probiotic derived bioactives shown to help restore the skin's natural radiance, imparting instant anti-aging benefits. myPROBIOTIC PEELS are uniquely packaged as convenient, all-inclusive kits containing innovative air-tight pen applicators and back-bar products that double as a post-peel regimen for the patient. Developed for all skin types, myPROBIOTIC PEELS are graduated treatments that work synergistically with mybody home treatment products for heightened, long-term results.

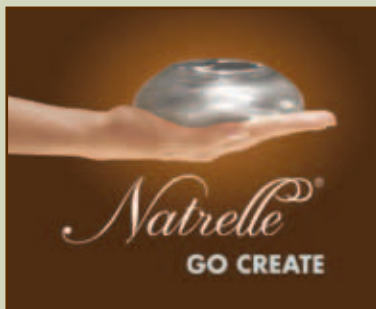
**mybody skincare:** 602-393-4668 or visit [www.loveybody.com](http://www.loveybody.com)



**Dermal Repair Cream**

Dermal Repair Cream is an ultra-rich cream that intensely hydrates and replenishes moisture to dry skin with high levels of antioxidant vitamins C and E.

**SkinMedica:** 866-867-0110 or visit [www.skinmedica.com](http://www.skinmedica.com)



**Total Rejuvenation Portfolio**

Allergan's Total Rejuvenation™ portfolio offers comprehensive, science-based, aesthetic product offerings, including BOTOX® Cosmetic; the Juvéderm® family of dermal filler products; and physician-dispensed skincare products. The portfolio also includes the Natrella™ collection, a wide-range of breast implant options for reconstructive and aesthetic breast surgery.

**Allergan:** 714-246-4500 or visit [www.allergan.com](http://www.allergan.com)



**Cortex**

The Cortex skin resurfacing device features fractional CO<sub>2</sub> (adjustable density up to 95% coverage), full coverage Er:YAG and fractional Er:YAG, in the same console. Fractional CO<sub>2</sub> skin resurfacing can be used for patients that require aggressive laser treatments or the Erbium laser can be used for darker skin type patients or patients requiring less aggressive fractional treatments. The CO<sub>2</sub> laser penetrates deep to provide heat for stimulating collagen, while the Er:YAG laser helps to soothe and soften the epidermis and remove pigmentation from the top layers of skin.

**Sandstone Medical Technologies: 205-290-8251 or visit [www.sandstonemedicaltechnologies.com](http://www.sandstonemedicaltechnologies.com)**



**Clear + Brilliant**

Clear + Brilliant™ is a unique laser-based system designed to prevent the signs of aging skin. This system utilizes Solta Medical's patented Intelligent Optical Tracking System™ (IOTS) for quick, uniform and predictable results. Patients will enjoy visibly smoother skin, along with improved tone and texture. Clear + Brilliant provides an affordable, minimal downtime procedure that is fast and effective.

**Solta Medical, Inc.: 877-782-6946 or visit [www.clearandbrilliant.com](http://www.clearandbrilliant.com)**



**VariLite**

The VariLite, with its 532 nm KTP and 940 nm diode wavelengths, offers dual-wavelength versatility in a single system solution. It combines reliability with true portability, efficient performance and clinical versatility for the precise treatment of vascular, pigmented and cutaneous lesions.

**IRIDEX Corporation: 800-388-4747 or 650-962-8100 or visit [www.iredex.com](http://www.iredex.com)**



**RevLite**

The RevLite™ Electro-Optic (EO) Q-switched Nd:YAG features PhotoAcoustic Technology Pulse (PTP), designed to provide safe, effective treatments at higher energy levels than traditional lasers. The EO Q-switch provides an extremely high-speed shutter to produce nanosecond pulse durations. High-speed repetition rates of PTP produce maximum energy output over a large spot size at the same fluence level, enabling physicians to treat large areas effectively and rapidly. FDA cleared for all skin types and for a variety of indications, including skin resurfacing, wrinkles, hair removal, acne scars, tattoo removal and treatment of vascular and pigmented lesions.

**ConBio, a Cynosure Company: 800-532-1064 or visit [www.conbio.com](http://www.conbio.com)**



**M22**

The M22 is a modular, multi-application platform, featuring Lumenis' proprietary Optimal Pulse Technology (OPT™) and Multiple-Sequential Pulsing. This smart, simple and innovative choice features intense pulsed light and Nd:YAG. This new platform was designed to consistently produce superior results and deliver predictable treatment outcomes for over 30 applications. Allowing plug-and-play upgradability and a resourceful modular design, the M22 provides maximum versatility and a great return on investment.

**Lumenis: 877-LUMENIS or visit [www.aesthetic.lumenis.com](http://www.aesthetic.lumenis.com)**



**Awesome Medical Marketing**

Awesome Medical Marketing is one of the world's largest cosmetic and plastic surgery directory networks focused on building directories based on specific cosmetic and plastic surgery keyword search volume. We offer more than 40 guides as one-stop solutions for patients seeking information about various procedures, techniques and advances. Surgeons can sign up for a listing and be featured on any guide to help patients find them. Patients can use the surgeon locator to contact a physician in their state, city or region. Our enhanced medical profiles give prospective patients complete information about you and your practice.

**Awesome Medical Marketing: 800-960-0094 or visit [www.awesomemedicalmarketing.com](http://www.awesomemedicalmarketing.com)**



**FotoFinder mediscope SELECTIVE face**

FotoFinder *mediscope* is a user-friendly imaging system for consistent before and afters of the face, neck and body. All camera settings are computer administered and automatically adjusted for follow-ups. Outstanding before and after photos are taken every time by any user. The integrated SkinSpector analysis not only shows sun damage (brown spots) and vascular conditions (redness), but quantifies its extent and compares it with a reference database.

FotoFinder Systems, Inc.: 888-501-0805 or visit [www.fotofinder-systems.com](http://www.fotofinder-systems.com)



**Elluminé**

Ellman introduces Elluminé™, a new, fully flexible CO<sub>2</sub> laser system for fractional skin resurfacing. Elluminé is an innovative system bringing the convenience of a flexible fiber delivery system enabling the user to reach all areas during treatment. The small laser console is compact and lightweight so it can be easily transported from location to location, maximizing your return on investment. Offer your patients a versatile range of treatments from full fractional skin resurfacing to light touch-ups.

Ellman International: 800-835-5355 or visit [www.ellumine.com](http://www.ellumine.com)



**ePrime**

The ePrime energy-based dermal remodeling system is the breakthrough, minimally invasive aesthetic device proven to deliver measured RF energy directly into the deep dermis for tone and volume improvement in a single treatment. Real time temperature feedback gives you the confidence in knowing that the right temperature is being delivered at optimal depth, again and again. ePrime is a low downtime solution with minimal patient after-care and it is safe for all skin types.

Syneron & Candela: 866-259-6661 or visit [www.syneron.com](http://www.syneron.com)



**PinPointe FootLaser**

Cynosure distributes the PinPointe™ FootLaser™, an innovative laser-based device for the treatment of onychomycosis infections by healthcare providers worldwide. The PinPointe FootLaser is cleared in the U.S. and Canada specifically for onychomycosis (nail fungus) and is available for purchase globally.

Cynosure, Inc.: 800-886-2966 or visit [www.cynosure.com](http://www.cynosure.com)



**Stem Cell 3D Complex**

The future of skincare is now with DermaQuest™ Skin Therapy. Introducing Stem Cell 3D Complex, a revolutionary formula that is one of the most advanced anti-aging products to be introduced since the neuropeptide. Stem Cell 3D Complex, which uses biotech marine and botanical stem cell technology, powerful peptides and lighteners, and potent antioxidants, actively restores skin's youth, reducing wrinkle depth by 15% in just 20 days.

DermaQuest Skin Therapy: 800-213-8100 or visit [www.dermaquestinc.com](http://www.dermaquestinc.com)



**Reaction**

Reaction™ is a new dimension in aesthetic treatments. This FDA cleared multi-frequency and vacuum therapy, bi-polar radiofrequency device provides aesthetic professionals with a high level of control and the ability to precisely target specific skin depths, a combination that delivers immediate visible results. The Reaction offers flexibility to tighten, smooth and slim the skin by stimulating new collagen and elastin, promoting lipolysis, strengthening the dermal structure, reducing circumference and contouring the arms, tummy and thighs.

Viora, Inc.: 201-332-4100 or visit [www.vioramed.com](http://www.vioramed.com)



**Exilis**

Exilis from BTL is a technological breakthrough based on advanced radiofrequency technology. Exilis's Energy Flow Control system includes a built-in thermometer and tissue contact monitoring system that automatically regulates the heating power; therefore, therapy is faster and more powerful. Exilis's novel, scientifically proven technology provides excellent results for body shaping and the treatment of wrinkles and rhytides, leading to improvement of skin appearance and body image. Treatment with Exilis is painless and does not require any disposables.

**BTL Industries: 866-285-1656**  
or visit [www.exilis.com](http://www.exilis.com)



**ClearSense**

The ClearSense accessory extends the versatility of the JOULE platform with the ability to provide effective treatment for skin and nail\* rejuvenation in a lightweight and comfortable handpiece. ClearSense uses a unique real time temperature sensing handpiece to monitor treatment temperatures and optimize clinical outcomes. Indications include onychomycosis\*, wrinkles and warts. (\*CE marked, FDA 510(k) clearance pending.)

**Sciton, Inc.: 888-646-6999 or visit [www.sciton.com](http://www.sciton.com)**



**Q-Plus T**

Q-Plus T is a high-powered Nd:YAG 1064 nm / 532 nm and ruby 694 nm Q-switched combination system. Q-Plus T, a new standard in tattoo and pigmented lesion removal features three wavelengths to efficiently target all tattoo colors and pigmented lesions. Green, red, blue and black pigments can be removed successfully thanks to the strong photoacoustic effect, large spot size and the high repetition rate. The Optibeam flat top beam technology is an exclusive characteristic of the Q-Plus that ensures an extremely precise laser beam profile for safe and more effective treatments.

**Quanta System: +39 0331 376 797 or visit [www.quantasystem.com](http://www.quantasystem.com)**



**body-jet**

Implement jet-assisted fat transfer (J-AFT) with body-jet today. body-jet allows you to easily harvest large and small volumes of fat, with minimal trauma to the patient and to the harvested fat cells. With our gentle harvest method, dislodging the fat by simultaneously irrigating and aspirating, there is no need for spinning and processing.

**human med, Inc.: 972-556-9593 or visit [www.humanmed.com](http://www.humanmed.com)**



**StarLux 500**

The StarLux® 500 laser and pulsed light aesthetic system offers an unparalleled variety of aesthetic treatments including: fractional non-ablative and ablative skin resurfacing, hair removal, photofacials for pigmented and vascular lesions, leg vein treatment and more. The StarLux 500 offers treatments with exceptional versatility, ease of use and comfort — for remarkable results.

**Palomar: 800-725-6627**  
or visit [www.palomarmedical.com](http://www.palomarmedical.com)



**LightPod Lasers**

Aerolase manufactures the innovative family of LightPod® aesthetic lasers that are portable, powerful and pain free. The LightPod Neo™ 1064 nm laser is for pain free hair removal on all skin types, photorejuvenation with skin tightening, vascular lesions, tattoo reduction and many other medical and aesthetic applications. The LightPod Era™ 2940 nm laser is for laser peels, gentle resurfacing, acne scar reduction and lesion removal. All LightPod lasers feature a cost-effective, sensible service policy with no routine maintenance required and no costly disposables.

**Aerolase: 877-379-2435 or visit [www.aerolase.com](http://www.aerolase.com)**



**WHITE LIGHTENING**

Featuring botanically based formulas including Norwegian Kelp Extract, WHITE LIGHTENING™ combines a proprietary blend of pharmaceutical grade lightening agents that correct and prevent hyperpigmentation while preserving the skin's health. WHITE LIGHTENING Complex is the only product that targets hyperpigmentation in five ways: provides antioxidant protection, reduces inflammation, interrupts communication between melanocyte and keratinocyte, inhibits production of melanin and exfoliates without irritation. WHITE LIGHTENING Serum, recommended as a nighttime booster, safely and effectively brightens targeted hyperpigmented areas.

**IS CLINICAL, an INNOVATIVE SKINCARE Brand:**  
888-804-4447 or visit [www.isclinical.com](http://www.isclinical.com)



**HydraFacial MD**

The HydraFacial MD® provides cleansing, exfoliation, extraction and hydration, all while Vortex-Fusing™ antioxidants, peptides and hyaluronic acid. Ranked above IPL for skin rejuvenation, the HydraFacial™ provides non-invasive, non-surgical procedure options that deliver instant results with no discomfort or downtime. Proven effective for all skin types, the HydraFacial targets common skin conditions such as fine lines, wrinkles, hyperpigmentation, brown spots, sun damage and oily skin.

**Edge Systems Corporation: 800-603-4996 or visit [www.edgesystemscorp.com](http://www.edgesystemscorp.com)**



**Ouchless Needle**

Pain is one of the biggest barriers to trial and use of neurotoxins and dermal fillers. The Ouchless™ Needle addresses this issue, providing a less painful experience for your patients. The Ouchless Needle is a disposable syringe-attachable dispenser that efficiently delivers a precise stream of instantly-acting vapocoolant, just ahead of the tip of the needle piercing the skin, which avoids messy, time-consuming numbing creams.

**Ouchless Needle: 800-730-3015 or visit [www.ouchlessneedle.com](http://www.ouchlessneedle.com)**



**i-Lipo**

i-Lipo is the latest in laser lipolysis, offering a way to achieve inch loss and body contouring with no pain, no needles and no downtime. Clinical tests prove that it is an effective method of targeting problem areas of fat on parts of the body such as the stomach and thighs. Treatment pads containing laser diodes are placed on the target area. A typical user can expect to reduce an area by one or two dress sizes during the course of treatments.

**Chromogenex Technologies Ltd.: +44(0)1554-755444 or visit [www.chromogenex.com](http://www.chromogenex.com)**



**New MIDAS**

New MIDAS® is an outstanding, non-invasive device for body reshaping and face-lifting. With ICE RF and IR, New MIDAS has shown significant effects in eliminating subcutaneous fat and cellulite, while at the same time stimulating collagen regeneration. This cost-effective and high-performance system enables physicians and practitioners to offer quality treatments to patients with superior ROI, excluding consumable goods. Typically body treatments take 20 minutes and face treatments take 10 minutes.

**Hironic Co., Ltd.: +82 31 777 9711 (ext. 3)  
or visit [www.hironic.com](http://www.hironic.com)**



**Gemini**

The Gemini, with its 1064 nm Nd:YAG and 532 nm KTP, stands out in an exploding non-invasive aesthetic laser market by pushing the envelope on versatility, speed and effectiveness, while maintaining a solid record of safety and reliability. With integrated contact cooling, dual wavelengths and dual handpieces, the Gemini gives you one of the most powerful aesthetic green lasers ever developed and treats a vast array of conditions including acne, wrinkles, redness diffusion, age spots and unwanted hair.

**IRIDEX Corporation: 800-388-4747 or 650-962-8100 or visit [www.iridex.com](http://www.iridex.com)**



**iPixel**

Providing fast fractional resurfacing options, the new iPixel series offers practitioners enhanced clinical benefits through unmatched speed, superior safety and proven efficacy. iPixel rests on two small wheels at the tip of the module which roll across the patient's skin. Unlike traditional lasers which use a stamping or scanning technique, the iPixel module allows you to treat the targeted area with high speed, elegant efficiency and reduced patient downtime.

**Alma Lasers: 224-377-ALMA (2562) or visit [www.almalasers.com](http://www.almalasers.com)**



**Intelligent**

Nouveau Contour's exclusive Intelligent device is a microprocessor driven device on the market offering a fully sealed, one-time use, needle cartridge system. The Intelligent has been widely recognized and sought after as one of the most advanced technologies on the market today.

**Nouveau Contour: 877-628-7201 or visit [www.nouveaucontourusa.com](http://www.nouveaucontourusa.com)**



**EpiCare-DUO and Q-Clear**

The EpiCare-DUO™ laser system, provides both 755 nm and 1064 nm laser output in a single, intuitive 21st Century platform. Offering speed, efficacy, versatility, safety, ease-of-use, reliability, cost and interface features, this system significantly enhances any laser hair removal practice. The Q-Clear™, is a revolutionary Q-switched Nd:YAG laser, providing a paradigm for treatment of pigmented lesions such as sun damaged skin and age spots, and for removal of unwanted tattoos.

**Light Age: 732-563-0600 or visit [www.lightage.com/aesthetic](http://www.lightage.com/aesthetic)**



**SPECTRA**

Lutronic's dual mode SPECTRA™ laser has been engineered to address various dermatologic and aesthetic applications. The dual mode capability provides four distinct Q-switched mode wavelengths – 1064 nm, 532 nm, 585 nm and 650 nm. In addition, SPECTRA features a patented long-pulse mode 1064 nm laser (Spectra Mode™). Both modes, uniquely combined into one system, provide your practice with a wide-range of clinical options for common patient indications including non-ablative resurfacing, tattoo removal, as well as pigmented and vascular lesions.

**Lutronic: 888-588-7644 or visit [www.lutronic.com](http://www.lutronic.com)**



**Fractora**

Fractora skin resurfacing treatment is an advanced and versatile bi-polar radio-frequency fractional treatment. Fractora provides superior skin improvements by fractionally ablating the skin and restructuring deeper tissue through an array of pin electrodes. This gentle heating of subdermal tissue promotes collagen restructuring with minimized patient downtime. Handpieces connect to the multifunctional Invasix device allowing the practitioner to combine Fractora with other facial procedures, or for use on its own.

**Invasix: 855-411-BODY (2639) or visit [www.invasix.com](http://www.invasix.com)**



**PowerX Lipo System**

The PowerX® Lipo System is the industry leading choice for precision power-assisted liposuction. The unique rotational motion generated by this system allows physicians to remove fatty tissue all the way around the cannula, rather than just above or below the orifice. A wide-range of speed and angle settings allows the physician to tailor the system to any body contouring application – from gentle, superficial work to more aggressive large volume fat removal.

**Sound Surgical Technologies: 888-471-4777 or visit [www.powerxlipo.com](http://www.powerxlipo.com)**



**Trios**

Trios™ was developed by Viora's research and development team, with over two decades of engineering experience in intense pulsed light (IPL) based systems. Trios empowers your business by providing you with a variety of aesthetic applications including long-term hair removal, photorejuvenation, acne clearance and skin pigmentation treatments that target sun damage and age spots. Trios was designed to ensure that practitioners are equipped with a system that delivers uncompromising performance, safety and efficacy on all levels.

**Viora, Inc.:** 201-332-4100  
or visit [www.vioramed.com](http://www.vioramed.com)



**Excel V**

With a powerful 532 nm KTP laser and two 1064 nm Nd:YAG laser modes, the Cutera Excel V system offers the ability to treat a wide-range of vascular conditions in a single system, along with efficient cooling and excellent visibility of the treatment area. This modern laser gives you more treatment options.

**Cutera:** 415-657-5500 or visit [www.cutera.com](http://www.cutera.com) or [www.excelv.com](http://www.excelv.com)



**NaturaLase QS**

The NaturaLase QS is a high powered Q-switched laser delivering 2 joules of Q-switched 1064 nm to tissue. High power, along with multiple wavelengths and a flat top beam profile, make the NaturaLase QS a new standard in laser tattoo removal. New for the NaturaLase QS is the NaturaPulse Mode, a 250 μm pulse for skin rejuvenation and remodeling.

**Focus Medical:** 203-730-8885 or visit [www.focusmedical.com](http://www.focusmedical.com)



**Pellevé Wrinkle Reduction System**

The Pellevé™ Wrinkle Reduction System with GlideSafe™ technology is the latest innovation in non-invasive, virtually pain free, non-ablative facial skin tightening. The technology utilizes advanced RF to heat the deep layers of the skin, causing collagen to contract and tighten without damaging the epidermis. After treatment, the skin begins to produce new collagen, improving skin firmness and resulting in a naturally refreshed appearance. Pellevé is powered by the new S5 generator, which also supports traditional surgical accessories for cutting and coagulating soft tissues.

**Ellman International:** 800-835-5355 or visit [www.pelleve.com](http://www.pelleve.com)



**SmoothShapes XV**

The SmoothShapes® XV system featuring Photomology® technology combines heating through dynamic laser (915 nm) and light (650 nm) energy with mechanical manipulation (contoured rollers and vacuum) for temporary reduction in the appearance of cellulite. The newly released Petite laser handpiece now allows for cellulite and contour improvements in smaller sized treatment areas and patients. SmoothShapes XV with Petite and XV handpieces complement one another for treatment of the whole patient – shoulders to calves, and the areas in between.

**Cynosure, Inc.:** 800-886-2966  
or visit [www.cynosure.com](http://www.cynosure.com)



**DOUBLO**

DOUBLO® is a second generation HIFU system using ultrasound for face-lifting and skin tightening. This device is designed with a user-friendly interface and offers parameter selection. DOUBLO widens the choice of therapy depending on the patient's conditions. It also features multi-transducers, 128ch high resolution image probe and Windows 7 applications. In addition, three cartridges provide up to 2,400 shots so it is very cost-effective.

**Hironic Co., Ltd.:** +82 31 777 9711 (ext. 3) or visit [www.hironic.com](http://www.hironic.com)