

Aesthetic Professionals Appreciate Benefits of P.L.E.A.S.E. Laser Device

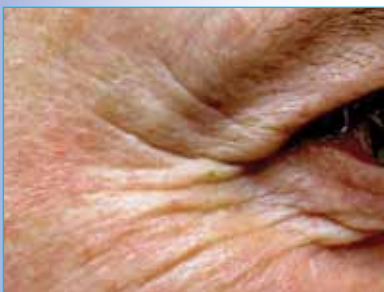
By Sarah Franz Wheeler, Contributing Editor



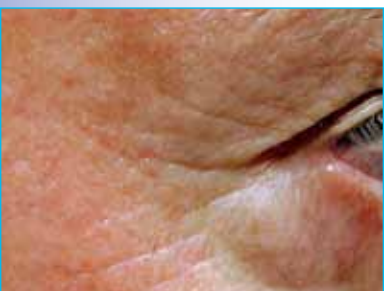
Sven Rohmann, M.D., Ph.D.
Clinical Physician
Medical Advisor
Cosmetic Laser Center
Herrsching, Germany



Yogeshvar N. Kalia, Ph.D.
School of Pharmaceutical Sciences
University of Geneva
Geneva, Switzerland



Lateral canthal rhytides before Tx



Lateral canthal rhytides six months after one treatment with P.L.E.A.S.E.

Photos courtesy of Laser Center Herrsching

Multiple industries will soon experience the benefits of the recently launched, versatile P.L.E.A.S.E.[®] (Precise Laser Epidermal System) Professional laser device from Pantec Biosolutions (Ruggell, Liechtenstein). This unique, flexible platform technology can be used for a diverse range of applications, delivering outstanding clinical results in aesthetic and conventional dermatology, as well as transdermal drug delivery.

P.L.E.A.S.E. Professional is a compact, bench-top system combining powerful diode pumped Er:YAG fractional ablative laser technology and advanced, pulse forming technology to customize treatments. This combination ensures precise intra-epidermal microporation for increased skin permeability and pain free transdermal delivery of drugs with large molecular weights.

For the aesthetic dermatology industries, P.L.E.A.S.E. offers fractional ablation with controlled heat profiles to achieve skin rejuvenation and contouring treatments, in addition to treatment of benign epidermal and dermal lesions.

"In comparison to other lasers I have used, the P.L.E.A.S.E. Professional device is small and compact, but very powerful, providing excellent aesthetic results," stated Sven Rohmann, M.D., Ph.D., clinical physician and medical advisor at the Cosmetic Laser Center in Herrsching, Germany. "Patients experience short downtime and little, if any, adverse effects as can be seen with other lasers. Since it combines the advantages of CO₂ and standard Er:YAG, it is ideal for advanced fractional skin rejuvenation procedures and many other applications," he added.

P.L.E.A.S.E. Professional's advanced pulse rate – 500 Hz compared to the more standard 20 Hz – allows treatments to be customized with precisely controlled thermal effects and depth of

penetration. "Patients are very pleased with the immediate and long-term effects," added Dr. Rohmann.

In addition, P.L.E.A.S.E. Professional is a groundbreaking solution to highly sensitive drug delivery procedures. Its fractional ablative laser administers topically applied bioactive substances such as stem cells, antibodies and other therapeutics via skin microporation. "My research group at the University of Geneva has been using the P.L.E.A.S.E. device for four years," stated Yogeshvar N. Kalia, Ph.D., of the School of Pharmaceutical Sciences, University of Geneva. "We have performed multiple studies to investigate potential therapeutic applications. To date, we have investigated more than thirty therapeutic drugs, ranging from small molecules such as lidocaine and diclofenac to larger mono- and polyclonal antibodies."

"From a drug delivery perspective," continued Dr. Kalia, "the P.L.E.A.S.E. Professional offers several advantages over existing systems. This device allows for controlled, individualized delivery of therapeutic agents in response to patient needs. It is possible to create hundreds, even thousands, of pores and the number of energy pulses used to create each pore – which determines dermal depth – can be programmed to ensure reproducibility. Both parameters enable fine tuning of the amount of drug delivered, as well as where it is administered within the skin."

Physicians have found the P.L.E.A.S.E. device to be a user-friendly addition to their practice. "In my experience P.L.E.A.S.E. requires less maintenance as a result of its diode pumped technology," Dr. Rohmann shared. "One big advantage of the system is the extended application range, enabling more effective combination treatments – microporation and application of cosmeceuticals – and its lightweight portability."